

# recollection



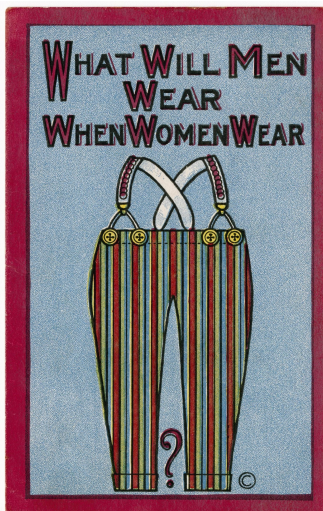
W I S C O N S I N

## Primary Sources to Engage Students with State and Local History

*Elementary Education Edition - November 2021*

Images of historical people, places, and events from their own communities can spark students' curiosity about history and inspire inquiry-based learning. **Below are just a few examples of the thousands of local primary sources available through Recollection Wisconsin for classroom use.** You can search <https://recollectionwisconsin.org> using your community or county name with the recommended search terms following each topic to find more!

### Civil Rights Movements



[What will men wear.  
anti-suffrage postcard. 1913](#)

*UW Digital Collections*



[March protesting the Eagles  
Club's all-white policy,  
Milwaukee, 1966](#)

*Wisconsin Historical Society*

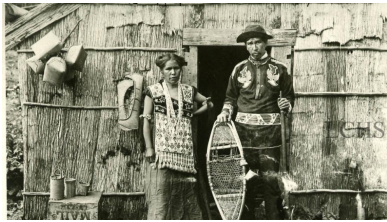


[March in Milwaukee to protest  
recent police action in Selma,  
Alabama, 1965](#)

*UW-Milwaukee Libraries*

**Suggested search terms:** anti-slavery, women's suffrage, voting rights, labor, civil rights, fair housing, women's rights, gay rights, treaty rights, protest, sit-in

## Wisconsin First Nations



[Maggie Bearskin Skye and George St. Germain, 1908](#)

*Langlade County Historical Society*



[Hat with beadwork, Michelle Funmaker, 1983](#)

*Logan Museum of Anthropology, Beloit College*



[Sister Florence & Mr. Green from Odanah, 1935](#)

*Marquette University Archives*

**Suggested search terms:** Ojibwe, Ojibwa, Lac Courte Oreilles, Lac du Flambeau, Red Cliff, Bad River, St. Croix, Sokaogon, Ho-Chunk, Menominee, Oneida, Potawatomi, Stockbridge-Munsee, Brothertown, Native Americans, American Indians

---

## Local Historical Events



[Berthed ship Edmund Fitzgerald, 1959](#)

*Milwaukee Public Library*



[Bird's eye view of Peshtigo, 1871](#)

*Wisconsin Historical Society*

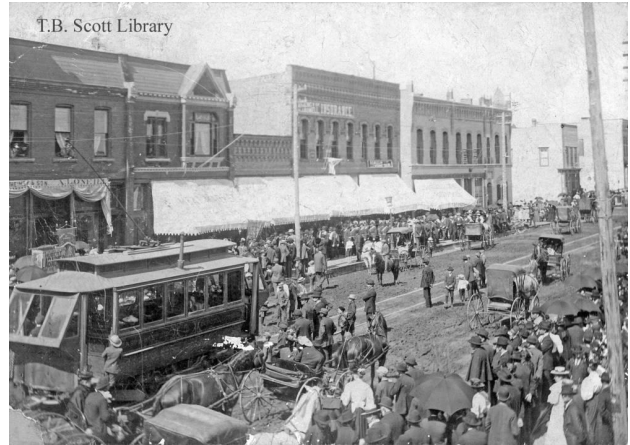
### Suggested topics and search terms:

- Transportation and communication: railroad, highway, telegraph, telephone, shipping
- Population changes: migration, immigration, suburbs, housing
- Lifestyle changes: education, recreation, tourism
- Environmental events: tornado, flood, blizzard, fire

# Industrialization, Agriculture, Urbanization, and Labor



[Cooper Underwear factory employees, ca. 1900](#)  
*Kenosha History Center / UW Digital Collections*



[Streetcar on East Main Street, Merrill, 1892-1893](#)  
*T. B. Scott Library*



[Planting potatoes, ca. 1915](#)  
*New Berlin Historical Society*



[Logging crew hauling timber](#)  
*Langlade County Historical Society*

**Suggested search terms:** miners, farmers, loggers, cheese factory, factory workers, industry, livery, wagon, train, automobile, Main Street (or names of other local streets), block, businesses, business district, office building, commercial building, city directory, bird's eye view

## Home Life: Continuity and Change



[Mr. and Mrs. C.A. Bacon, Paul and Rex Sheldon, 1895](#)  
*Beloit College Archives*



[Ice skating on the Milwaukee River, 1897](#)  
*Milwaukee Public Library*



[Jerome 'Sanome' Sanapaw tapping maple sugar, Keshena](#)  
*College of Menominee Nation S. Verna Fowler Academic Library/Menominee Public Library*

**Suggested search terms:** family, children, food, clothing, furniture, music, traditions, recreation, chores, pets, vacation, hobby

---

### What is Recollection Wisconsin?

Historical resources available through Recollection Wisconsin are contributed by libraries, archives, museums and local history organizations across the state. These materials include photographs, letters, scrapbooks, yearbooks, audio and video recordings, maps, artifacts, and other unique resources documenting local, state, national, and even international communities, events, and people. Using the resources available through Recollection Wisconsin, students can engage with history, develop critical thinking skills, and construct meaningful knowledge from evidence.

For questions, comments, or requests, please contact us at [info@recollectionwisconsin.org](mailto:info@recollectionwisconsin.org).